

LR300 THERMO RANGER

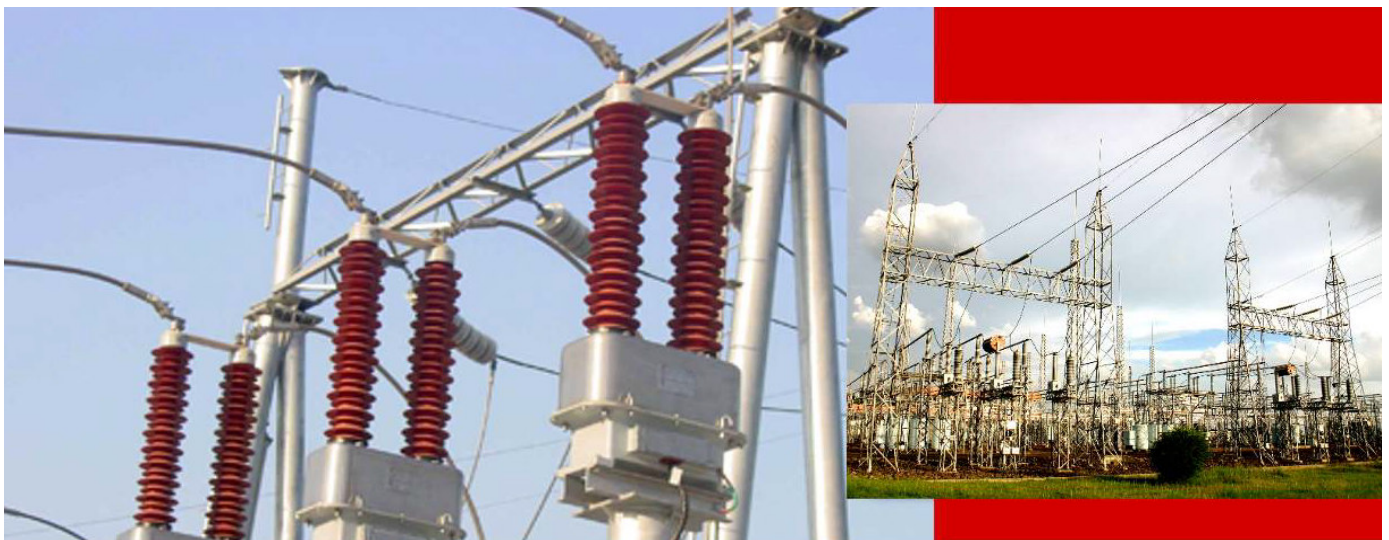
IRtek Medium-Long Range Infrared Thermometer

LR300 is designed for non-contact temperature measurement of small target located in medium-long distance. This portable infrared thermometer is widely used in electrical power, railway, safety industry for measuring temperature of transmission line, substation's equipment junction, also safety monitoring of various plant maintenance. The high D to S ratio (300 : 1) is the main feature of this model. For extra long range application use LR1000, please contact our distributor for detail information.

Specifications:

Temperature Range	: -20°C to 280°C
Distance to Spot	: 300 : 1
Display Resolution	: 1°
Accuracy	: ±5°C for < 100°C, ± 5% for >100°C
Measuring Distance	: 2m ~ 15m
Spectral Response	: 8 ~ 14 um
Emissivity Adjustable	: 0.50 to 1.00
Laser Sighting	: Single point class II diode laser
Operating Temp.	: -10°C to 50°C
Standard Accessory	: Hard Case
Size	: H245xD60xW240 mm
Power	: 2 x 9V battery
Weight	: 1kg

- CE** ■ One year warranty for unit and sparepart
 ■ Calibration / verification facility using certified Black Body by IRtek Australia



Lightweight
 High D to S ratio
 Riflescope
 Long Range



For more information please call 9409 4058 or email sales@gsrlasertools.com.au

Unit 7 - 7 Prindiville Drive
Wangara, Western Australia 6065
Phone: +61 8 9409 4058
Fax: +61 8 9409 4068

www.gsrlasertools.com.au

Email : sales@gsrlasertools.com.au