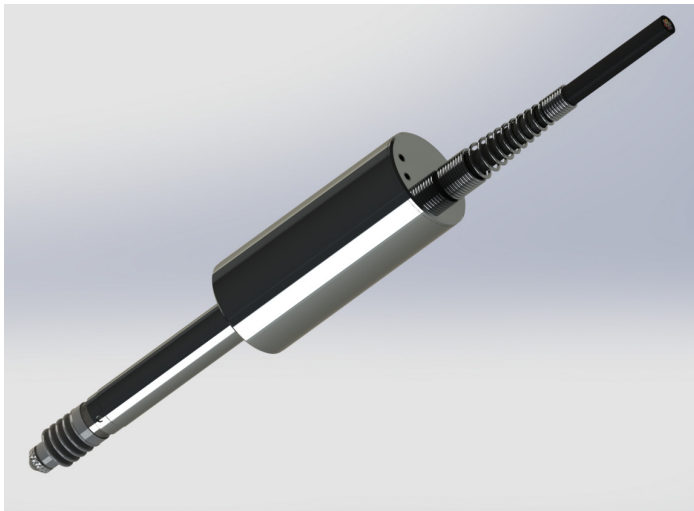


G-TYPE

Probe with direct analogue output
Position feedback & linear
displacement measurement



- ▶ $\pm 1, \pm 2.5, \pm 5, \pm 10$ mm Measurement Range
- ▶ DC Unipolar, Bipolar and 4-20 mA Output
- ▶ Excellent Repeatability: $< 0.15 \mu$
- ▶ Linearity 0.2%
- ▶ Precision Ball Bearings
- ▶ Large Selection of Probe Tips
- ▶ 3D drawings available

The G-Type of Analogue DC/DC Displacement probes are based on the LVDT sensing principle and feature a high accuracy, long life linear ball bearing (as AX-Series). All models incorporate a Linear Variable Differential Transducer (LVDT) as the measuring element, together with high performance conditioning electronics for low noise and superior linearity while being able to cope with a wide supply range.

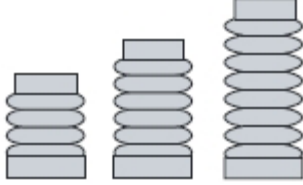
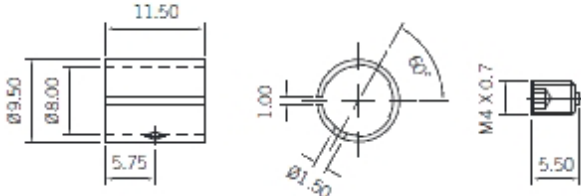
The G-Type Analogue Displacement probe range has evolved from its predecessor DG series with marked improvement in features and performance. This product offers a perfect solution for various displacement applications with a good linearity and repeatability.

- Extended Measurement Range up to 20 mm
- 4-20 mA Output
- Line Regulation
- Metal End Cap
- Better Front Bearing

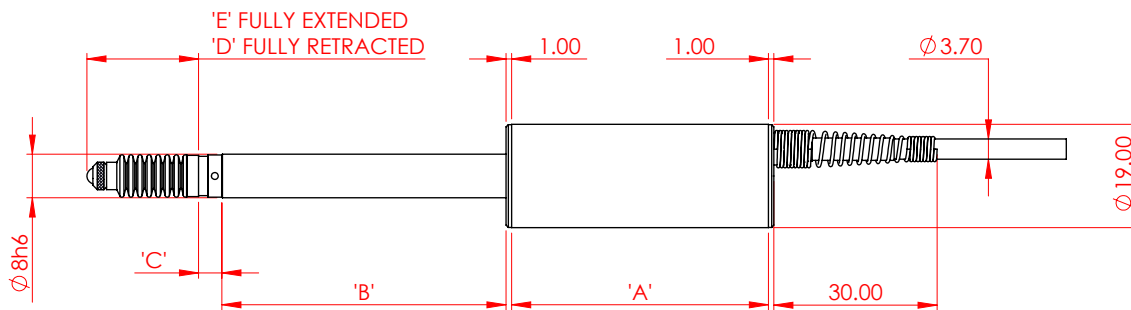
Technical Specification

Generic Sensor Types				
Voltage Output (DC Bipolar)	WG/2/S	WG/5/S	WG/10/S	WG/20/S
Voltage Output (DC Unipolar)	VG/2/S	VG/5/S	VG/10/S	VG/20/S
Current Output (4 - 20 mA)	IG/2/S	IG/5/S	IG/10/S	IG/20/S
Measurement				
Measurement Range (mm)	2	5	10	20
Pre - Travel (mm)	0.15			
Post - Travel (mm)	0.85			
Linearity (%FSO)	<±0.2			
Repeatability (µm)	0.15			
Temperature coefficients (%FSO / °C)	<0.02			
Mechanical				
Body Diameter -1 (mm)	19			
Body Diameter -2 (mm)	8			
Case Material	400 Series			
Tip Force@Electrical zero (±20%)	0.7 N			
Cable Type	PU			
Standard Cable Length	2 M			
Standard Cable Style	Screened			
Nominal Mass (g) (±5)	34	34	55	58
Environmental				
Operating Temperature	+5 to +65 °C			
Storage Temperature	-20 to +85 °C			
Sealing	IP64			
Vibration - 1	1 to 10 g rms linear 10 to 50 Hz			
Vibration - 2	10 g rms linear 50 Hz to 1 kHz			
Electrical Interface		All Voltage Models	All Current Models	
Input	10 to 30 VDC		4 - 20 mA Loop Powered	
Ripple (DC Output - %FSO)	0.20			
Bandwidth	500 Hz			
Electrical Connections		All Voltage Models	All Current Models	
Red	V Supply +		4-20 mA Loop Powered (+)	
Blue	V Supply -		4-20 mA Loop Powered (-)	
White	V Output +			
Green	V Output gnd			
Black and Screen	Earth			

G-Type Accessories

<p>Replacement Gaiters</p>	 <p>Gaiters can be replaced when damaged. Only pneumatic push probes require gaiter rings.</p>
<p>Clamping Collet</p>	<p style="text-align: right;">805048</p>  <p>For use with all 8 mm clamping shaft sensors. The clamping collet distributes the clamping forces evenly around the shaft. Using the supplied grub screw, the probe can be loosened while holding the collet in place.</p>
<p>Probe Tips</p>	<p>Various probe tips are available.</p>

DIMENSIONAL DRAWING



Probe Designation	'A' mm	'B' mm	'C' mm	'D' mm	'E' mm
VG2S	47.00	28.00	3.75	11.10	14.10
VG5S	47.00	28.00	4.25	12.10	18.10
VG10S	47.00	52.00	4.25	14.60	25.60
VG20S	47.00	92.00	3.10	24.10	45.10
IG2S	42.00	33.00	3.75	11.10	14.10
IG5S	42.00	33.00	4.25	12.10	18.10
IG10S	42.00	57.00	4.25	14.60	25.60
IG20S	42.00	97.00	3.10	24.10	45.10
WG2S	47.00	28.00	3.75	11.10	14.10
WG5S	47.00	28.00	4.25	12.10	18.10
WG10S	47.00	52.00	4.25	14.60	25.60
WG20S	47.00	92.00	3.10	24.10	45.10

G SERIES RANGE

DIMENSIONS ARE NOMINAL AND SPECIFIED IN MILLIMETRES
 SOLARTRON PURSUES A POLICY OF CONTINUOUS DEVELOPMENT.
 SPECIFICATIONS IN THIS DOCUMENT MAY THEREFORE BE CHANGED WITHOUT NOTICE.

For 3D drawings please contact sales.solartronmetrology@ametek.com

United Kingdom - Head Office

Solartron Metrology
 Steyning Way
 Bognor Regis
 West Sussex
 PO22 9ST
 Tel: +44 (0) 1243 833333
 Fax: +44 (0) 1243 833322
[Sales.solartronmetrology@ametek.com](mailto:sales.solartronmetrology@ametek.com)

France

Solartron Metrology
 Rond-point de l'Espine des Champs
 Buroplus - Bat. D
 Elancourt 78990
 Tel: +33 (0)1 30 68 89 50
 Fax: +33 (0)1 30 68 89 59
france.solartronmetrology@ametek.com

Germany

Ametek GmbH
 Solartron Metrology Division
 Rudolf-Diesel-Strasse 16
 40670 Meerbusch
 Tel: +49 (0) 2159 9136 500
 Fax: +49 (0) 2159 9136 505
vertrieb.solartron@ametek.de

India

Ametek Instruments India Private Limited
 1st Floor, Left Wing
 Prestige Featherlite Tech Park
 Plot #148, EPIP II Phase
 Whitefield, Bengaluru 560 066
 Karnataka, India
 Tel: +91 80 6782 3200
 Fax: +91 80 6782 3232

USA

Solartron Metrology
 USA Central Sales Office
 915 N. New Hope Road, Suite C
 Gastonia, NC 28054
 Tel: +1 800 873 5838
 Fax: +1 704 868 8466
usasales.solartronmetrology@ametek.com

China

AMETEK Commercial Enterprise
 (Shanghai) Co. Ltd
 No. 1 AMETEK Road
 Ju Ting Economic Development Zone
 Shanghai 201615
 Tel: +86 21 5763 2509
 Fax: +86 21 5866 0969 Ext. 261/262
china.solartronmetrology@ametek.com



Offices worldwide

Agent and distributor details available at
www.solartronmetrology.com



Q 09540

Solartron pursues a policy of continuous development. Specifications in this document may therefore be changed without notice.

Datasheet 503144
 Issue 2
 EDCR 20579